

WVSW VENTLESS HOOD

WVSW VENTLESS HOOD



Features

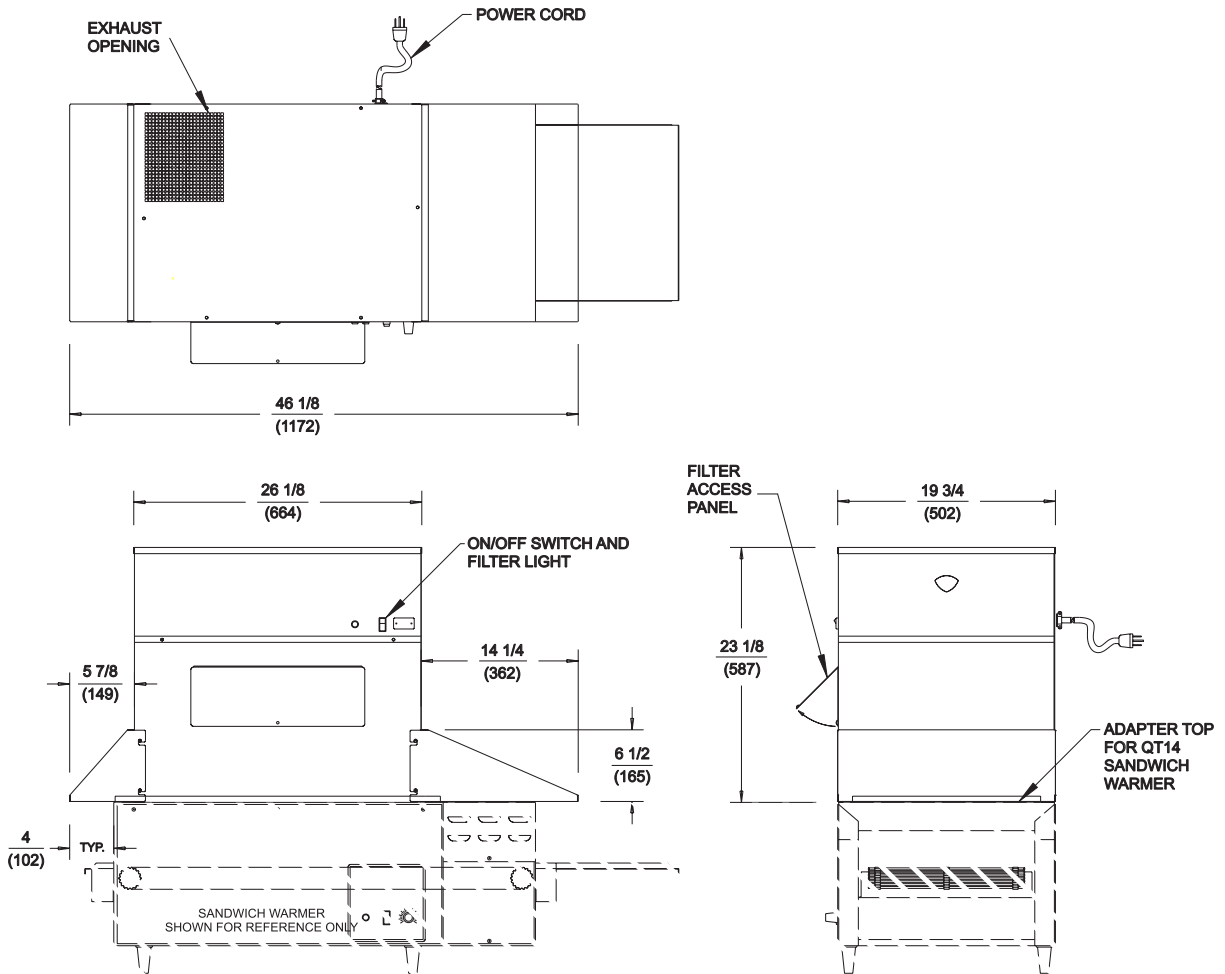
- **All stainless steel construction.**
- Designed to fit **Holman model QT14** sandwich maker.
- **Lighted on/off switch.**
- **"Replace Filter" light** indicates when filter needs to be changed.
- **90-95% high-efficiency filter.**
- **Charcoal carbon filter** maximizes smoke and odor abatement.
- Side access panel provides **easy filter replacement.**
- **Entrance and exit capture canopies** allow easy clean-up.
- **Exhaust** is located on the top of the unit.
- 120 volt unit plugs into a **standard 120 volt outlet.**



STD. 4

MODEL WWSW
VENTLESS HOOD

DIMENSIONS: $\frac{\text{INCH}}{\text{(MM)}}$



WWSW SPECIFICATIONS:

MODEL	VOLTS	WATTS	AMPS	PHASE	POWER SUPPLY CORD
WWSW	120	312	2.6	SINGLE	NEMA 5-15P

NOTE: Specifications are subject to change without notice and are not intended for installation purposes.

WELLS MANUFACTURING COMPANY
 2 ERIK CIRCLE, PO BOX 280, VERDI, NV 89439 U.S.A.
 USA PHONE: (775) 689-5700 • FAX: (775) 689-5972
 FOR ORDERS ONLY: (888) 356-5362 • FAX: (800) 356-5142
 www.wells-mfg.com
 2003 WELLS MANUFACTURING • PRINTED IN THE U.S.A.
 01/03 • REV(-)

